

Adapter for ventilation duct - BWP-143A

Interactive fire detection systems

Product Datasheet

Features

- Designed to detect smoke in ventilation ducts
- Alarm indicator visible through the lid
- Reduces dust and other deposits on the detector
- Junction box for easy connection
- Sampling pipes available in different lengths

Description

BWP-143A is designed for early detection of smoke and combustion products in ventilation ducts of commercial and industrial applications.

The principle of operation is based on the Venturi effect. The adapter is mounted on the outside of the duct with the sampling tubes extending into the HVAC duct. Air flowing through the duct will cause a differential pressure across the inlet tube and the exhaust tube. This pressure sets up an airflow through the housing where the airflow is forced to pass the detector head.

All detectors using detector base BWA-100 can be mounted in the adapter.



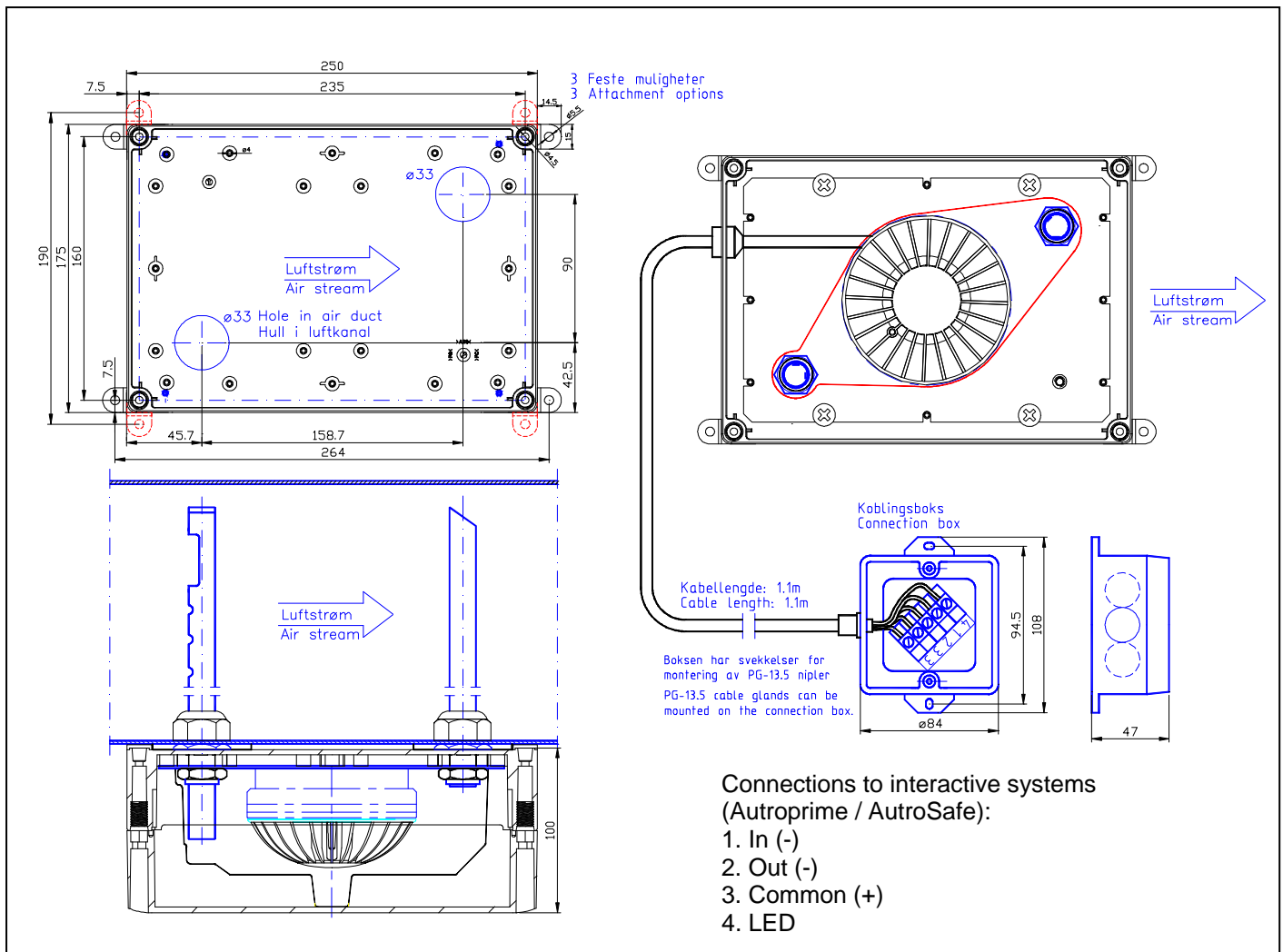
Technical specifications

Dimensions box	HxWxD = 250x175x100 mm
Weight 116-BWP-143A	1575 g
Weight 116-BJ-358/100	123 g
Weight 116-BJ-358/150	172 g
Weight 116-BJ-358/300	322 g
Weight 116-BJ-358/550	570 g
Weight 116-BJ-358/800	820 g
Materials	Polycarbonate / steel
Colour	Light grey / transparent
Air velocity in duct	4-25 m/s
Cable inlets junction box	Membrane glands
Maintenance	Necessary dust cleaning
Service	Replace detector if faulty
Degree of protection	IP55

Part number	Description
116-BWP-143A	Adapter for ventilation duct, for interactive systems (Autoprime, AutoSafe)
116-BJ-358/100	Pipekit L=100
116-BJ-358/150	Pipekit L=150
116-BJ-358/300	Pipekit L=300
116-BJ-358/550	Pipekit L=550
116-BJ-358/800	Pipekit L=800



Dimensions and connections



AUTRONICA FIRE AND SECURITY AS

Head office, NO-7483 Trondheim, Norway Tel: +47 73 58 25 00, fax: +47 73 58 25 01, e-mail: info@autronicafire.no
 Oil and Gas division, Stavanger, Norway Tel: +47 51 84 09 00, fax: +47 51 84 09 99
 Maritime division, Spikkestad, Norway Tel: +47 31 29 55 00, fax: +47 31 29 55 01